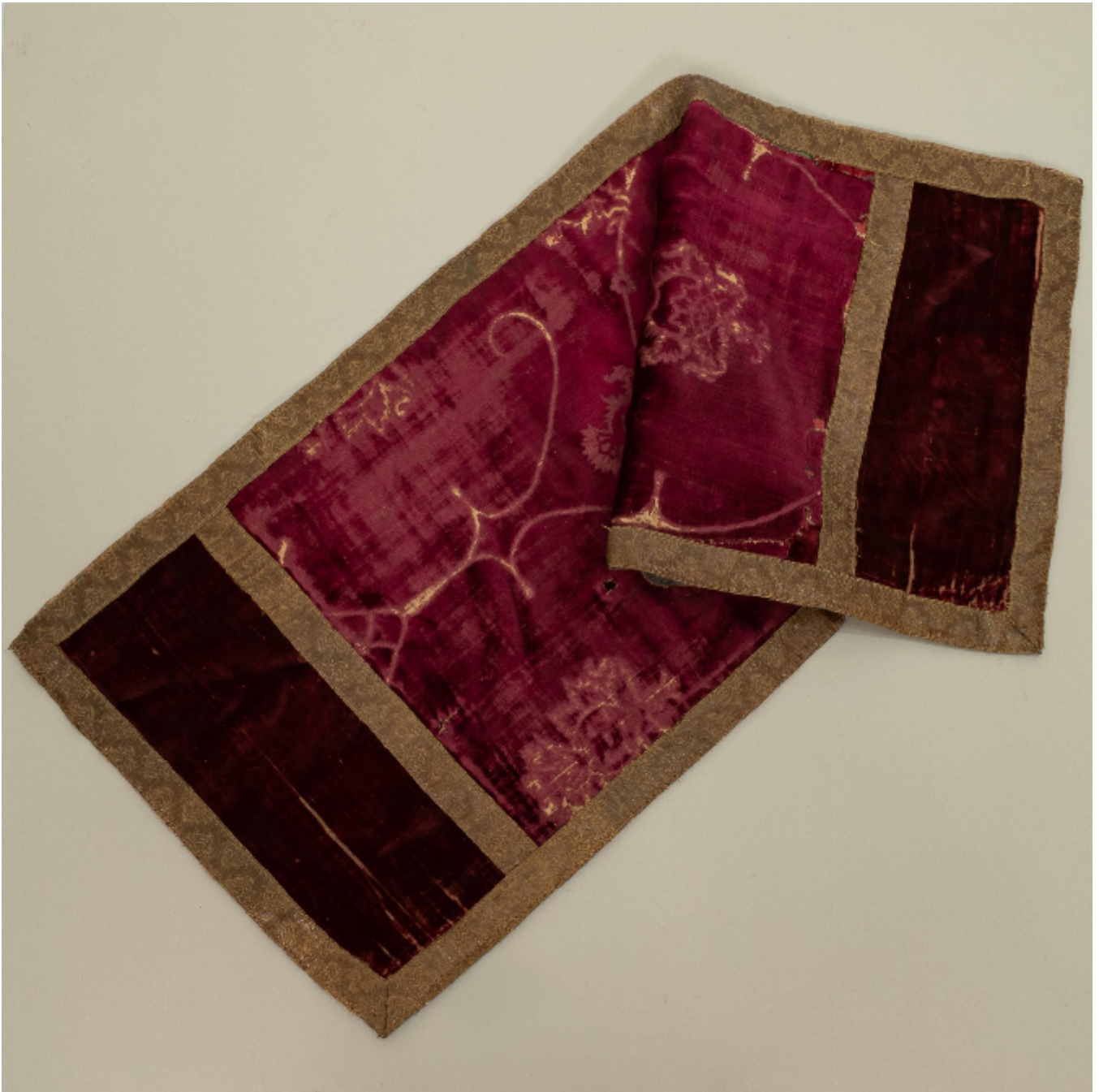




A table runner of 15th century silk velvet, Italian, Venice or Florence, circa 1450-75

£595



Houlston UK Ltd

Correspondence: Cotswold Business Centre, 2 A P Ellis Road, Upper Rissington, GL54 2QB •

Showroom: Tudor House, Sheep Street, Stow-on-the-Wold, GL54 1AA

REF: 4883

Width: 88.5 cm (34.8")

Depth: 36 cm (14.2")

## Description

Historically put together, the central panel of claret velvet of ferronnerie design, with joined similarly coloured plain silk velvet ends, all edged in metallic braid and recently backed with a high quality modern woven pure wool