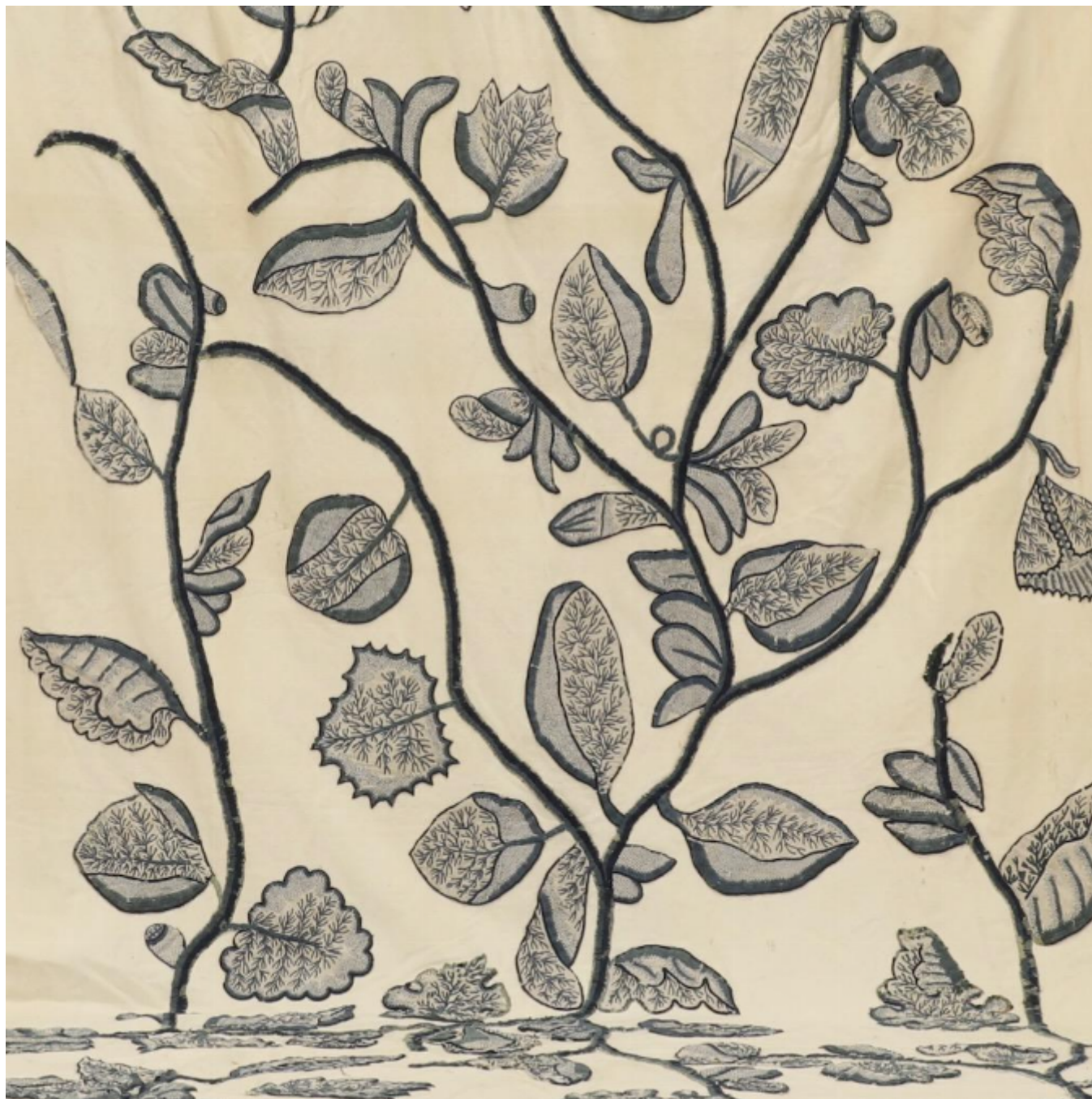




A rare 17th century panel of crewel embroidery, English, circa 1650-80  
antique textiles

Sold



Houlston UK Ltd

Correspondence: Cotswold Business Centre, 2 A P Ellis Road, Upper Rissington, GL54 2QB •

Showroom: Tudor House, Sheep Street, Stow-on-the-Wold, GL54 1AA

REF: 4437

Height: 245 cm (96.5")

Width: 152 cm (59.8")

## Description

Undoubtedly part of a set of bed hangings, designed all over with meandering branches bearing large exotic leaves, worked in deep blue worsted wools, the needlework historically re-applied to a replacement linen/cotton twill ground, consistent with the original ground, remnants of which remain within the leaf reserves

For a similar hanging see The V&A Museum, London, accession number T.72-1938