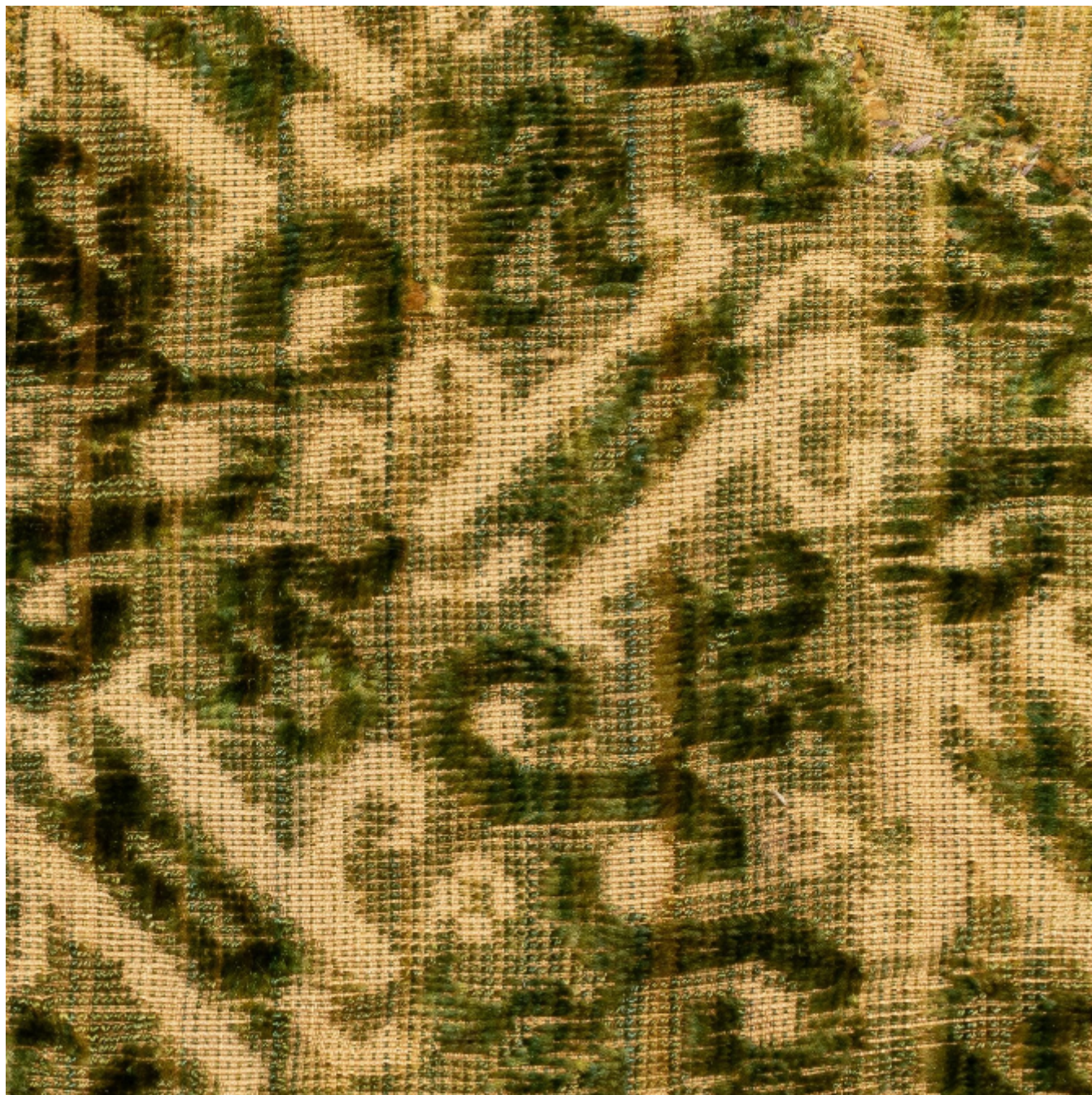




A rare large panel of figured ciselé silk velvet, Italian, Lucca, circa 1590-1610

£1,950



Houlston UK Ltd

Correspondence: Cotswold Business Centre, 2 A P Ellis Road, Upper Rissington, GL54 2QB •

Showroom: Tudor House, Sheep Street, Stow-on-the-Wold, GL54 1AA

REF: 4661

Height: 101 cm (39.8")

Width: 101.5 cm (40")

## Description

Historically painstakingly assembled, presumably from a fine garment or vestment, edged with a 17th century woven silk and gilt metal fringed braid, backed with a 19th century silk

A similar example is recorded by Roberta Orsa Landini, 'The Velvets In The Collection Of The Costume Gallery In Florence / I Velluti Nella Collezione Della Galleria Del Costume Di Firenze', (2017), p.206, fig. 236