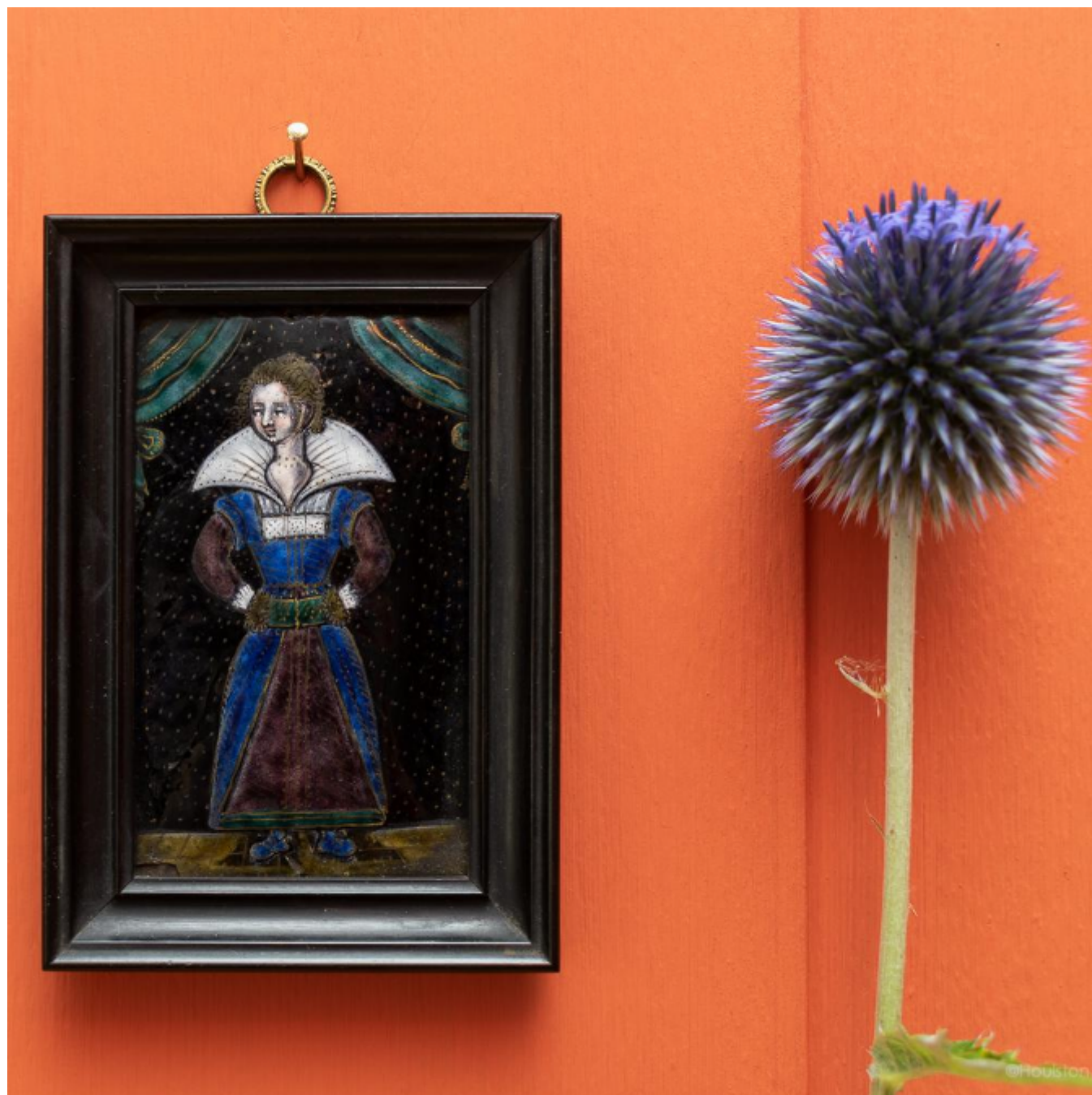


An interesting and small 17th century enamel plaque, Limoges, France, circa 1640

Sold



REF: 2885

Height: 11.2 cm (4.4")

Width: 7.7 cm (3")

## Description

Designed with a well-dressed lady, standing beneath a draped canopy, wearing a mulberry-coloured dress with bold lace collar, her hands resting in a muff, enamel on copper, ebonised frame.

For a comparable plaque see Suzanne Higgott, *The Wallace Collection Catalogue of Glass and Limoges Painted Enamels*, London 2011, no. 88.