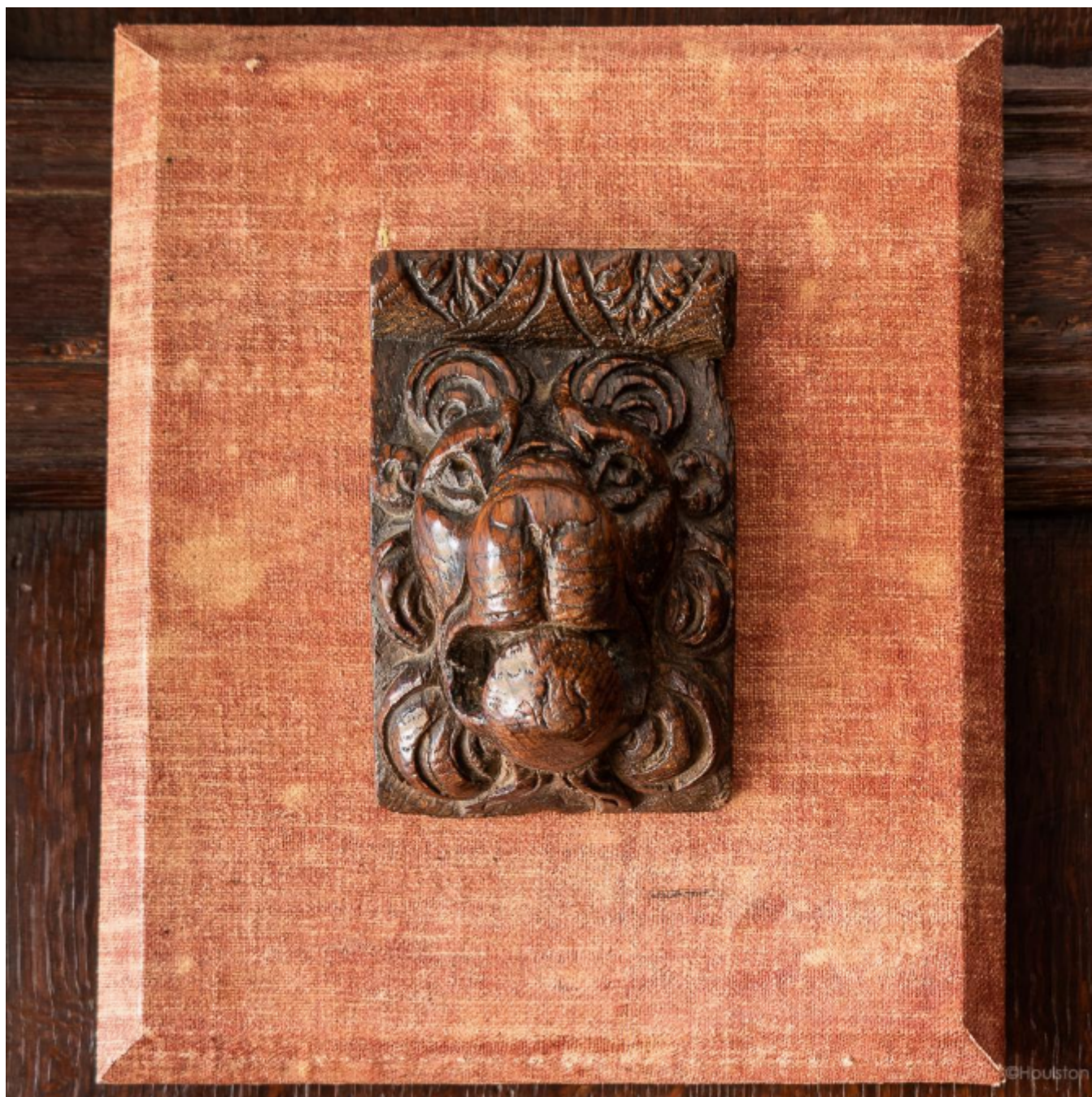




A charming Elizabeth I carved oak mount in the form of a lion mask, circa 1590

Sold



Houlston UK Ltd

Correspondence: Cotswold Business Centre, 2 A P Ellis Road, Upper Rissington, GL54 2QB •

Showroom: Tudor House, Sheep Street, Stow-on-the-Wold, GL54 1AA

REF: 2831

Height: 22 cm (8.7")

Width: 18.5 cm (7.3")

Depth: 7.6 cm (3")

## Description

With curly mane and open mouth. Mounted on a board covered in 17th century glazed linen.

On view in the showroom at Tudor House, Sheep Street, Stow on the Wold, GL54 1AA